

# User's Manual

Model : KIND-mini

Educational Survey Meter

Simple & Easy Radiation Check Solution



Japan Science Foundation

# Moving Average Mode

## ※ Moving Average Mode

- ◎ Power On : Press the button for longer than 1 sec.
- ◎ Power Off : Press the button for longer than 1 sec.
- ◎ Sound On/Off : Press button shortly( < 0.5 sec.)  
toggle Sound On and Off

### Power ON



### Moving Average



### Sound On



### Sound Off



# Sampling Mode



## ※ Sampling Mode

- ◎ Power On : Press the button for longer than 1 sec.
- ◎ Power Off : Press the button for longer than 1 sec.
- ◎ Sound On/Off : Press button shortly (< 0.5 sec.)  
toggle Sound On and Off

### Power On



### Sampling(10 sec)



### Sampling(30 sec)



### Sampling(60 sec)



### Sound On



### Sound Off



# CPM mode



## ※ CPM Mode

- ◎ Power On : Press the button for longer than 1 sec.
- ◎ Power Off : Press the button for longer than 2 sec.
- ◎ Start Counting : Press button shortly( < 0.5 sec.)  
Count for 60 sec.  
Update count every 1sec.

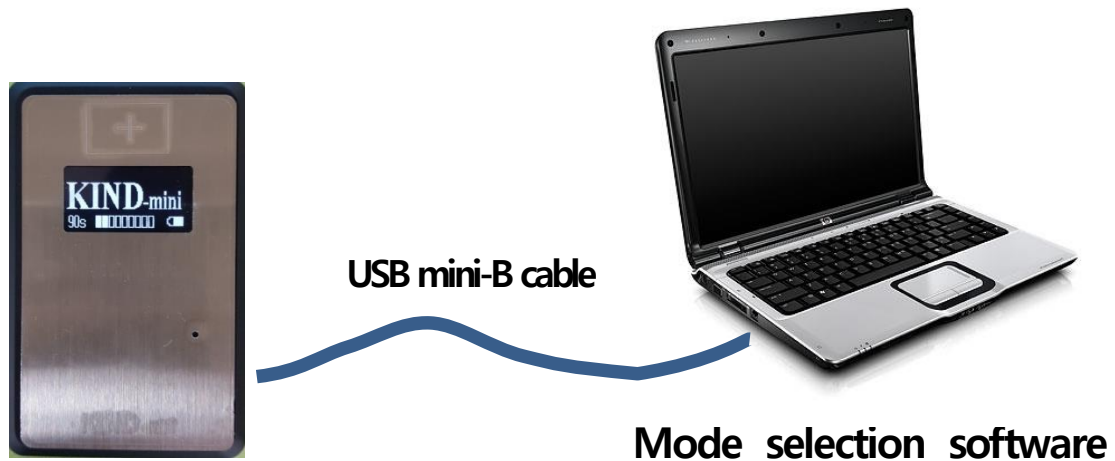
Power ON



CPM

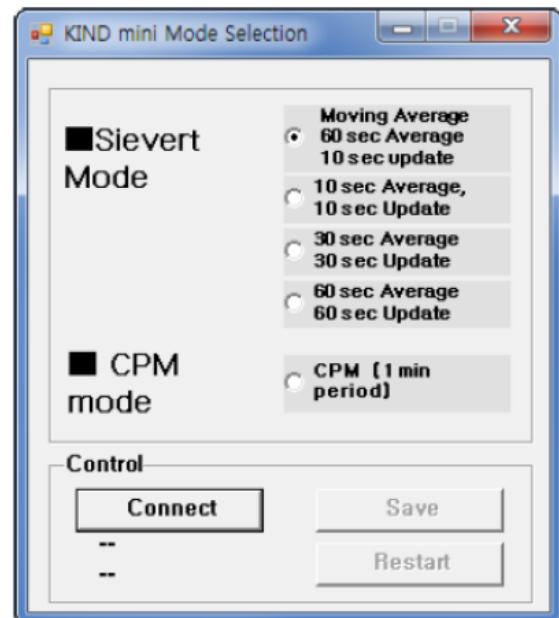


# Mode Change S/W



## ※ Mode Change

- ◎ The Mode can be changed only by PC software.
- ◎ The PC Software can be run in Winodw XP, Window7, Window8.X, Windows10.
- ◎ To connect Kind-mini, USB mini-B cable is needed.



# Additional functions

## ※ Logger

- ◎ To save the result in CSV
- ◎ To learn radiation education and ICT

KIND-mini 測定

SN:DM1PAANC UD:Q-SAFE

78~700keV 0.003000 CAL1: 1.0

700keV~ 0.006000 CAL2: 1.0

Clear Cells

スタート ストップ CSV出力

時刻	空間線量率 (uSv/h)	78~700keV 係数	78~700keV カウント	700keV~ 係数	700keV~ カウント	Cal 1
03:07	0.063	0.003000	9	0.006000	6	1.0
03:08	0.045	0.003000	9	0.006000	3	1.0
03:09	0.039	0.003000	5	0.006000	4	1.0
03:10	0.066	0.003000	10	0.006000	6	1.0
03:11	0.078	0.003000	8	0.006000	9	1.0
03:12	0.033	0.003000	7	0.006000	2	1.0
03:13	0.057	0.003000	5	0.006000	7	1.0
03:14	0.054	0.003000	10	0.006000	4	1.0

## ※ Simple Calibration

KIND mini 選択プログラム

① 本体接続

KIND-mini とパソコンを USB で接続

CONNECT

② 環境放射線測定

校正治具 (線源無し) に KIND-mini をセット

10 分 (1~60) 5分以上を推奨

START

③ NORM 測定

校正治具 (線源有) に KIND-mini をセット

10 分 (1~60) 5分以上を推奨

START

④ 誤差

P: 基準値 2.0

Q: 散乱等補正ファクター 1.000

初期値、設定しない場合は1.

START

⑤ 校正

CAL2: 校正定数 100.0

SET

## CAUTION

- ◎ It is necessary to obtain The Calibration Kit additionally.



The Calibration Kit using NORM (monazite)

# Specifications



Category	Measurement Sensor
Radiations	Gamma, X-ray
Energy Range	100 ~ 3,000 keV
Sensor Type	Plastic Scintillator

Category	Radiation Measurement
Range	Survey Meter Mode 0.001 $\mu\text{Sv/h}$ ~ 30.00 $\mu\text{Sv/h}$  Count Per Minute 0~99999 Count
Error	Below 15% ( Cs-137 referenced)
Sensitivity	Above 300 CPM/ $\mu\text{Sv/h}$ ( Cs-137 Referenced)

Category	Exterior
Size	95mm x 60 mm x 17mm
Weight	100g
Color	Black , Metal Panel
Material	ABS Plastic + Stainless Panel

Category	User Interface
LCD type	Mono blue OLED
Resolution	128 x 64 dots
Display Size	1.4 inch
Sound	Piezo Buzzer,
Button	1 Smart Button

Category	Power
Type	Internal, Rechargeable Li-Polymer, 3.7V 550mAh  One time, replaceable CR2430 Lithium x 2, Coin Cell (TOSHIBA)
Run Time	Internal, Rechargeable ~48 hour (Sound Off condition)  One time, replaceable ~17hour (Sound condition)  (dose rate, under 0.5 uSv/h condition)